

The 3rd edition: Tokyo Textile Scope 2027 Spring/Summer – FINAL REPORT -



The renewed 3rd edition of Tokyo Textile Scope (TTS) 2027 Spring/Summer, organised by the Japan Fashion Week Organization (JFWO), was successfully held. While carrying forward the strengths cultivated through previous exhibitions such as Japan Creation and Premium Textile Japan, we have continued striving to create an exhibition that offers a highly satisfying experience for visitors.

One of the primary objectives for visitors is to catch up on the latest trends. To address this, the “Trend & Index” area was positioned near the entrance on the second floor. In addition, many visitors appeared to look forward to the popular “What’s Next Textile” corner, which explores upcoming bestselling textiles. The highly creative and carefully developed textiles presented by exhibitors also seemed to receive strong recognition and praise. Also held on the second floor was “Focus on Textile Regions.” Following the first edition spotlighting the Sanbi denim region and the second focusing on Bishu wool, this edition featured Wakayama Knit. These regional production areas encompass the entire manufacturing process, including yarns, fabrics, dyeing, and finishing. Through TTS, we aim to highlight and communicate the strengths of such production regions from a global perspective. VR (virtual reality) experience areas introducing regional factories were also presented at booths within international exhibitions such as Milano Unica and Première Vision. By offering a realistic and engaging way to experience craftsmanship and manufacturing, these initiatives help communicate the appeal of textile production in an enjoyable and accessible manner. Efforts to introduce and promote Japan’s textile regions in this way are attracting increasing attention and expectation.

A trade fair is naturally a place for business discussions, but its role extends beyond that alone. Visitors attend with a wide variety of objectives. During the exhibition, we also observed the emergence of inter-regional collaboration and industry–academia partnerships, fostering further human interaction and exchange.

At the venue, concerns were voiced regarding rising raw material and fuel costs, as well as quantitative shortages in supply. The textile industry continues to face challenging circumstances. While a single exhibition cannot change global conditions, we hope to create a platform where not only buyers, but also the people who will lead the industry in the future, can inherit and carry forward many diverse things. We believe it is important to establish such new pillars for the future of the exhibition.

(Hiroshi Komoda, Executive Director, Japan Fashion Week Organization (JFWO))

< Exhibition Outline >

◇ Dates: April 15-17, 2026 (Wed. – Fri.) 10:00 – 18:00 (*Until 16:00 on the final day)

◇ Venue: Tokyo Metropolitan Industrial Trade Center Hamamatsucho-Kan

◇ Support: 16 organisations

Ministry of Economy Trade and Industry / Ministry of Foreign Affairs / Intellectual Property Strategy Headquarters / Japan External Trade Organization (JETRO) / Organization for Small & Medium Enterprises and Regional Innovation, Japan / Tokyo Cosmopolitan Government / The Japan Chambre of Commerce and Industry / Japan Textile Federation (JTF) / Japan Chemical Fibers Association (JCFA) / Japan Fashion Association / Japan Apparel-Fashion Industry Council / THE INSTITUTE FOR THE FASHION INDUSTRIES /Japan Department Stores Association / Japan Textile Exporters Association / Japan Textiles Importers Association / Japan Jeans Association

◇ No. of visitors: 5,586

As this edition was held in April, there appeared to be fewer cases of educational institutions arranging group visits for students as part of their academic curriculum. Although visitor numbers were slightly lower than those of the first edition of TTS — partly due to the absence of evening events such as an opening reception — some exhibitors and visitors expressed positive expectations that the earlier timing of the exhibition could create new business opportunities.

● Visitors' Feedback - A Place to Discover Inspiring Fabrics -

Some visitors commented positively that they were pleased to have the opportunity to experience and touch a wide variety of fabrics (apparel company). In particular, entrepreneurs and independently established brands noted that "as an individual business, it can often be difficult to establish transactions directly, so having a platform like TTS is something we truly appreciate and enjoy" (apparel company). In some cases, business discussions initiated at the exhibition may lead to future opportunities and long-term partnerships. On the other hand, there were also more pragmatic opinions, such as "while there are certainly attractive fabrics here, it cannot become a business unless it leads to volume production" (textile manufacturer). Although the majority of visitors commented that the exhibition was "easy to navigate and view," continued efforts will still be necessary to meet the diverse expectations and needs of the wide range of visitors attending TTS.

◇ No. of exhibitors (No. of companies/booths): 86 companies /94 booths

Exhibitor list ► <https://jfwtextile.com/TTS/en/2027ss/exhibitors/list.php>

● **New Exhibitors: 9 companies/associations**

(Eight companies and one association listed below have no previous exhibition record at JFW-organised domestic fairs such as JFW-JC or PTJ.):

IONO MIZUTA CO., LTD./ KATSUKURA CORPORATION / NOSAWA & CO., LTD., YANTAI JINHE IMPORT & EXPORT CO., LTD. NOSAWA & CO., LTD. / WAKAYAMA KNIT INDUSTRIAL ASSOCIATION / X-Rite Japan / HEBEI XINDADONG TEXTILE CO., LTD. (China) / P.T. Tokai Texprint Indonesia (Indonesia) / Suzhou Kirei Textile Import & Export Co., Ltd. (China) / SuZhou Yike Textile Co., Ltd. (China)

On the third floor, YUMETEX CO., LTD. exhibited hand-washable silk fabrics. The company also participates in Milano Unica and noted that while Japanese textiles continue to be highly regarded for their high-density constructions, order volumes from Europe and the United States have become increasingly challenging in recent years, reflecting changes in overseas markets. SAIEI ORIMONO CO., LTD. also exhibited in order to gauge reactions to its "Illusion Silk," a material designed to appear unlike conventional silk.

MEIRIN SENI CO., LTD., which has traditionally focused primarily on diacetate textiles, presented a collection centred on triacetate fibres for this edition. The company also showcased fabrics combining filament yarns in the warp with spun yarns in the weft. SASAKI SELLM CO., LTD. presented refreshing materials including linen-like synthetic textiles, along with fabrics featuring distinctive surface textures. In particular, textured seersucker-style polyester fabrics and triacetate trouser materials received especially favourable responses. HATAOKA COMPANY & ASUWA KOGYOSYO adopted "Returning to the Origin" as its exhibition theme.

SUNWELL CO., LTD. equally highlighted linen-like synthetic materials, emphasising their wrinkle resistance, cool touch, ease of washing, and resistance to fuzzing. TORAY INDUSTRIES, INC. promoted materials such as "Ultrasuede" and "NANODESIGN." Five garments created by Keisuke Nagami of HATRA using "SillookMirai" were also exhibited. TAMURAKOMA & CO., LTD. presented cotton-like polyester textiles as part of its material proposals.

Overseas exhibitors also demonstrated a strong presence at the exhibition. Korea's SFT INC. presented materials for men's easy trousers featuring functional properties such as stretch, moisture absorption, and wrinkle resistance. The company also showcased non-iron shirt fabrics. Although SFT does not operate its own factories, it utilises production facilities located in Korea, Vietnam, and China. China's DALIAN EXE TRADE CO., LTD. focused primarily on menswear casual textiles. Suzhou Kirei Textile Co., Ltd., a textile company specialising in high-end

women's fabrics in China, has traditionally focused mainly on European and American markets. Since last year, however, the company has also begun expanding its business activities into the Japanese market.

On the fourth floor, MIZOROGI & CO., LTD. exhibited textile designs developed around four distinct themes. At the same time, the company noted that managing and protecting textile designs and intellectual property has become increasingly challenging. TANABE EMBROIDERY CO., LTD./WATANABE SANGYOU CO., LTD., both specialising in embroidery and lace, presented unique and unconventional embroidery techniques and original embroidered fabrics. Equally, CHARMANT CO., LTD. showcased newly developed embroidery and lace patterns as part of its latest textile proposals.

KUNISHIMA CO., LTD., known for its wool textiles, typically prepares more than 200 sample items for exhibition. For this edition, however, the company intentionally narrowed the selection to approximately 50 items in order to encourage deeper interaction and conversation with visitors. SUZUKEN WOOLEN MILLS CO., LTD. exhibited blended fabrics combining wool with materials such as linen, presenting lightweight and refreshing fabrics suited to the spring/summer season. KUWAMURA CO., LTD, SPUN DIVISION from the Nishiwaki production region introduced textiles using "Filroi®," a compact-spun yarn characterised by its rich oil content and softly moist surface texture. OHARAYASENI CO., LTD. highlighted the crisp, dry touch characteristic of linen materials. ALLBLUE INC. introduced denim fabrics made from 100% wool and 100% silk, while CLOTH JAPAN CO., LTD. displayed fabric samples measuring approximately 120 centimetres in length. Issues related to petroleum and raw material costs were also discussed throughout the venue. While companies continue making individual efforts to address these challenges, many indicated that price increases may ultimately be unavoidable.



Trend & Index Corner

The trend concept for 2027SS is “Temporal Space.” In an era increasingly defined by diversity and coexistence, there is a growing need for empathy— the ability to move forward with an awareness of the space that allows for coexistence. Now is the time to reflect on how we engage with this concept of “Temporal Space.” The spatial design theme for this edition was “Ma”, expressing the subtle intervals found between spaces, moments, and even sounds, while capturing the atmosphere, presence, and flow of time that resided within these intangible gaps and translating them into an immersive environmental experience.



JFWO Textile Trends► <https://www.jfwtextile.com/TextileView/en/2027ss/index.html>

What's Next Textile

The “What's Next Textile” area is a popular visitor-participation voting project that explores the next bestselling textiles. Now in its seventh edition, the initiative invited submissions from exhibitors, with selected materials passing a screening process before being showcased at the venue. A carefully curated selection of fabrics from 45 companies was presented. Many visitors made this area one of their first stops, with an increasing number of buyers later visiting exhibitors' booths in search of fabrics they had discovered there, making it one of the fair's key business-driving attractions.



The 1st Place winner this time was awarded to a fabric presented by KANEMASA KNITTING CO., LTD., exhibited as part of the Wakayama Knit group.

1st Place: KANEMASA KNITTING CO., LTD. (Wakayama Knit Industrial Association)

< Cupro Cotton 40G Double-Knit > (39% Cupro, 34% Cotton, 27% Polyester)

KANEMASA KNITTING CO., LTD. presented a 40-gauge double-knit fabric, featuring strongly twisted yarns of cupro filament and high-shrinkage polyester on the face side.

On the reverse side, Supima cotton is used and finished with a fibrillation process, giving the fabric a soft, refined texture.

- Reference price: JPY 4,500 per meter



The material presented this time is an ultra-high-density double-knit fabric developed using a custom-made super high-gauge 40G jacquard knitting machine specially engineered for KANEMASA KNITTING CO., LTD.. Particular attention was devoted to the structural design and yarn arrangement in order to achieve both dimensionality and volume while maintaining an ultra-high-gauge construction.

The key concept behind the product development was “Elegant Vintage.” Rather than creating a heavily processed vintage appearance, the intention was to preserve the inherent elegance and integrity of the material itself.

As the recent vintage boom gradually begins to settle, KANEMASA KNITTING proposes a new direction that combines seemingly contrasting elements: elegant luxury with refined tailoring appeal, layered with tasteful vintage-inspired characteristics such as subtle colour irregularities and rich surface texture.

Going forward, our company aims to continue presenting “the next textiles to be chosen” through comprehensive material proposals that integrate unique knitting machines, original material development, finishing techniques, and sophisticated yarn applications. (Mr. Kohei Hyakkendani, Director, KANEMASA KNITTING CO., LTD.)

2nd Place: SHIGAASA CO., LTD.

< Linen Denim > (100 % Linen / Ramie)

In expressing the denim trend using 100% linen, the company applied specialised yarn-dyeing and finishing techniques developed within its production region to create a distinctive worn-in, “faded” effect.

Unlike conventional denim, this fabric offers a softer hand while retaining the natural texture and character of linen.

- Reference price: JPY 2,400 per meter



The development of this fabric was inspired by the Jeans Sommelier Certification programme organised by the Okayama Prefecture Apparel Industrial Union. After obtaining the certification, we had the opportunity to visit factories in Kojima, Okayama, where we gained deeper insight into the jeans industry. The scale of the industry, together with its advanced technical expertise, provided considerable inspiration.

Following these visits, we immediately began exploring how such techniques and concepts could be adapted within Shiga's linen textile production region. Working closely with local dyeing and finishing specialists, we developed a lightweight linen denim fabric that recreates the distinctive worn-in and faded appearance associated with denim — without using indigo dyes. The resulting fabric offers a relaxed softness, lightness, and tactile comfort that make it especially suitable for spring and summer applications. Looking ahead, we intend to continue researching easy-to-handle denim textiles while further expanding the possibilities of Shiga's linen textile production industry. (Mr. Itsuki Tsuchida, SHIGAASA CO., LTD.)

3rd Place: TORAY INDUSTRIES, INC.

< Ultrasuede > (80% Polyester, 20% Polyurethane)

This piece features a layered construction combining tulle with Ultrasuede nu, known for its rich texture, refined appearance, and high functionality. A heat-insulating sheet is incorporated, while sharply defined motifs are created through laser processing. Embroidery is then added to enhance dimensionality and express a sense of lightness.

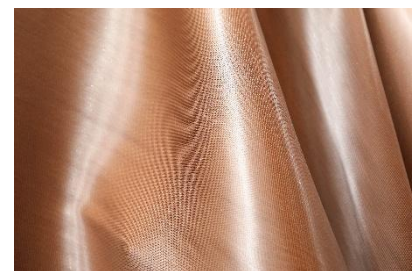


4th Place: NAKADEN KEORI CO., LTD.

< CU/E/N Monofilament Triple Weave > (51% Polyester, 36% Nylon, 13% Cupro)

To express a futuristic aesthetic, this fabric is constructed as a triple weave using nylon monofilament yarns. The result is a distinctive texture with a structured, modern appearance.

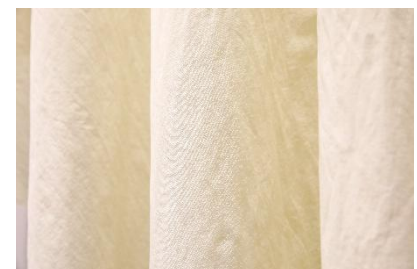
➤ Reference price: JPY 4,000 per meter



5th Place: KAJIF < NY + Washi Stretch Taffeta > (64% Nylon, 14% Polyurethane, 22% Washi)

This fabric combines fine-count washi (Japanese paper) with nylon to create a material with a light, crisp, and refreshing touch. Added stretch enhances comfort and versatility, making it suitable for a range of applications.

➤ Reference price: JPY 1,800 per meter



Focus on Textile Regions Vol.3 < Wakayama Knit > Experience Unreplicable Craftsmanship through VR (Virtual Reality)

The unique and unparalleled quality of Japanese textiles is rooted in the development of regional production areas across the country, each of which has inherited and evolved its own distinctive traditions and strengths. Building on this foundation, TTS highlights the unique appeal of these regions. The first edition focused on Japan's globally acclaimed denim, followed by a second edition spotlighting wool from the Bishu region. This project was also presented at Milano Unica and Première Vision, where it received high acclaim from international buyers.



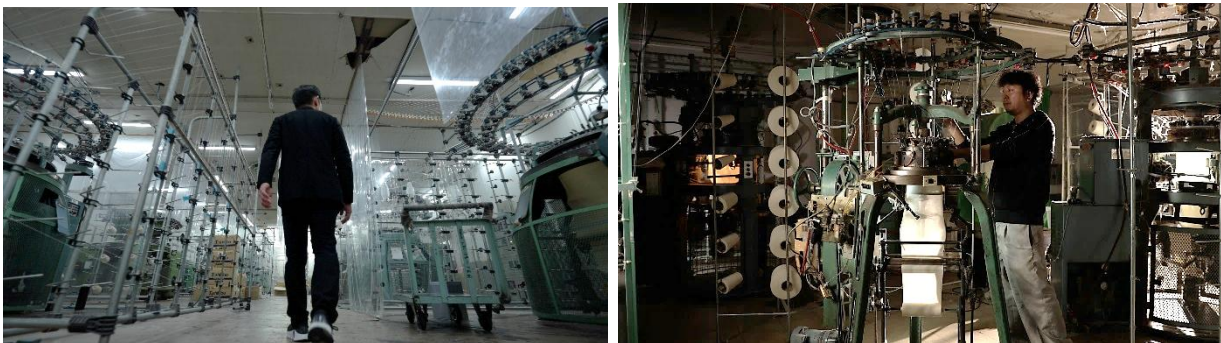
TTS aims to develop this initiative as an ongoing series and promote it widely, with the goal of showcasing the appeal of Japanese craftsmanship to the world and fostering the global dissemination of Japanese textiles.

During the Edo period, under the patronage of the Kishu Tokugawa clan, cotton craftsmanship in Wakayama was cultivated and later carried forward into the production of tabi socks, eventually evolving into the region's knit industry. The origins of modern Wakayama knit date back to the early 1900s, when just five Swiss circular knitting machines were introduced. During the Second World War, these machines survived air raids, allowing both traditional and modern technologies to coexist. This unique circumstance enabled Wakayama to develop into one of the world's leading knit production regions.

As demand grew for brushed cotton jersey fabrics, Wakayama became Japan's leading producer of circular knit textiles. In the post-war Showa era, synthetic fibre jerseys emerged, and when worn by Japanese athletes at the Tokyo Olympics, Wakayama knit gained international recognition. Even as times have changed, "Wakayama Knit" continues to evolve through a spirit of innovation and challenge.

Despite ongoing global instability and an uncertain market environment, the Milano Winter Olympics have provided momentum to the sports and outdoor sectors, which continue to perform strongly. Wakayama Knit, with its manufacturing approach aligned with these evolving trends, is attracting growing attention from global luxury brands. For this project, in addition to capturing stunning aerial views of the production region using drones and dynamic footage of factory operations, creators and artisans share their individual perspectives and passion for craftsmanship from within the production sites. Ten companies from the Wakayama knit production region participated in TTS. After experiencing the production environment via VR, visitors were able to explore the fabrics at each exhibitor's booth.

Mr. Tomohiro Yamashita, Chairman of the WAKAYAMA KNIT INDUSTRIAL ASSOCIATION, commented that “a new generation, including second- and third-generation successors, is now emerging within the production region, bringing renewed energy and youthfulness. It feels as though generational succession is steadily taking place.” He also reflected that “there were periods in the past when the production region tended to remain inward-looking. Even so, there has always been a strong willingness to take on new challenges, and the timing of being selected for ‘Focus on Textile Regions’ was extremely meaningful.” While remaining inward-focused may still allow companies to continue operating through commissioned production, it does not necessarily lead to the transformation toward proposal-driven and outward-facing business models — a challenge shared by many textile production regions across Japan. Within the booth area gathering knit companies from the region, “mini tours” guiding visitors through exhibitors’ booths were also conducted, encouraging active engagement rather than simply waiting for buyers to approach. In addition to showcasing physical textiles, the region also incorporated VR-based presentations as part of its communication efforts. There were also ambitious aspirations expressed for the future of the region, including the goal of fostering and supporting younger designers in the years ahead.



Photos: Wakayama Knit Production Facilities

< Exhibitors >

WAKAYAMA KNIT INDUSTRIAL ASSOCIATION

A-GIRL'S CO., LTD. / OKAZAKI KNIT CO., LTD. / KAZEKAMI KNITTING CO., LTD. / KANEMASA KNITTING CO., LTD. / KINAN KNITTING CORP. / HANWA CO., LTD. / FUJIBO TEXTILE, INC. / MARUWA KNIT CO., LTD. / Miwa Sen-i Kogyo Co., Ltd. / YOSHIDA SENKO CO., LTD.

< Companies Supporting the Filming > * In addition to the above exhibitors:

YAMAYO JERSEY CO., LTD. / Knitter

YUTAKA SENKO CO., LTD. / Dyeing & Finishing

ORANGE CO., LTD. / Sewing (Garment manufacturing)

A-BELL SUZUKI CO., LTD. / Sewing (Garment manufacturing)

JFWO FABRIC CONNECTION

Transforming “Encounters” into “Collaboration” — Creating New Value through Fabric Connection

The second edition of the matching programme “JFWO FABRIC CONNECTION” was held during TTS. The programme was launched to foster new collaborative opportunities and value creation by connecting the creativity of fashion designers with the advanced technical expertise of textile companies.

The first edition, held during the TTS exhibition in November 2025, demonstrated several positive outcomes, including:

- Smoother communication through the sharing of information in advance.
- Enhanced brand credibility through the involvement of JFWO.
- More efficient material sourcing through needs-based matching.
- The creation of new encounters with companies and materials that participants had not previously connected with.

Building on these achievements, the programme evolved beyond a one-time matching initiative into a year-round support programme spanning TTS 2026 AW and TTS 2027 SS. A total of 92 company introductions were arranged for 12 participating brands. For this second edition, the programme aimed to foster medium- to long-term relationships between brands and textile companies through continuous matching support, while also creating ongoing business opportunities for both sides.



Going forward, JFWO will continue expanding awareness of the programme while visualising and promoting successful collaboration cases and outcomes generated through these initiatives. In addition to supporting designers, JFWO will also further explore the needs and challenges faced by textile companies in order to create even more meaningful and mutually beneficial collaboration opportunities.

What's Next Seminar

A diverse seminar programme took place over three days in the event space on the second floor. It provided perspectives on the future of fashion and textiles, highlighting and examining timely topics.

- The Present and Future of the Wakayama Knit Production Region

"Scope on WAKAYAMA Knit" explored both the present and future of the Wakayama knit production region through two sessions held on April 15 and 16 — the first featuring companies from the production region, and the second bringing together creative directors and textile designers. The sessions were moderated by Mr. Shinya Miura, CEO of Itohen Co., Ltd.



The first session on April 15 featured five companies from the Wakayama knit production region as panellists, each presenting the unique characteristics, technologies, and strengths of their respective businesses.

The second session on April 16 focused on co-creation between creative directors and textile designers. The creative director of SHINYA KOZUKA commented that "what I expect from the Wakayama production region is its ability to create virtually anything. From fleece fabrics to loop-wheel knitting, everything exists in Wakayama. I would like to see Japanese knit textiles promoted more actively overseas." He also noted that "production regions with distinctive characteristics are especially valuable. It is important to further refine and strengthen what already makes them unique. Visiting a production region can sometimes provide inspiration that goes beyond one's imagination." The discussion also touched on the role of textile designers, whose work often remains behind the scenes despite playing a significant role in material development. It was noted that evaluation can vary depending on the company or brand behind the textile, and that corporate branding itself can ultimately shape future recognition and value. The discussions additionally highlighted the importance of continuing to take on challenges without fear of failure. Even seemingly difficult demands from creative directors may ultimately lead to innovation and new creative possibilities.

- DPP – No Time to Wait

<Digital Product Passports (DPP) at the Forefront>: Sustainability Regulations and Future Strategies the Textile Industry Needs to Know Now

Speakers:

Part 1: Mr. Yamashita (Deputy Director, Lifestyle Products Division, Ministry of Economy, Trade and Industry)

Part 2: Mr. Horino (General Manager, Textile Business Planning & Development Dept., Toray Industries, Inc.)

In the European market, Digital Product Passports (DPP) have become a major topic of discussion. Often described as an essential “passport” for market access, compliance with DPP requirements will become necessary for products sold within the EU market. More than simply responding to regulatory costs, DPP is increasingly being recognised as a strategic infrastructure investment for companies seeking to remain competitive in the global marketplace. Traditionally, garment labels primarily included information such as size, country of origin, and care instructions (such as laundry care symbols). Under DPP frameworks, however, products will also be expected to provide environmental impact data such as carbon footprint information, manufacturing history including chemical processing records, and circularity-related data such as recycling rates. Waiting until the anticipated rule revisions in 2027 may already be too late for effective preparation. Let us act now and adapt along the way.

< Tokyo Textile Scope / Upcoming Schedule >

The 4th Tokyo Textile Scope

Show dates: Oct. 14-16 (Wed. - Fri.), 2026 < 2027AW Show >

Venue: Tokyo Metropolitan Industrial Trade Center, Hamamatsucho-Kan (All floors: 2F, 3F, 4F, 5F)

(Address: 1-7-1, Kaigan, Minato-ku, Tokyo)

***Application period: April – May 20, 2026**

Guide to Application ► <https://jfwtextile.com/TTS/en/2027aw/application/>

The 5th Tokyo Textile Scope

Show dates: April 14-16 (Wed. - Fri.), 2027 < 2028SS Show >

Venue: Tokyo Metropolitan Industrial Trade Center, Hamamatsucho-Kan (All floors: 2F, 3F, 4F, 5F)

(Address: 1-7-1, Kaigan, Minato-ku, Tokyo)

***Application period: Nov. – Dec., 2026**

The 6th Tokyo Textile Scope

Show dates: Oct. 13-15 (Wed. - Fri.), 2027 < 2028AW Show >

Venue: Tokyo Metropolitan Industrial Trade Center, Hamamatsucho-Kan (All floors: 2F, 3F, 4F, 5F)

(Address: 1-7-1, Kaigan, Minato-ku, Tokyo)

***Application period: April – May, 2027**

Contact for inquiries:

Japan Fashion Week Organization (JFWO)

Textile Division

Tel:+81-3-6805-0791 enquiry@japancreation.com

<https://www.jfwtextile.com>